

SHARON WEE CREATIONS CUTTER SET



WHAT IS IT?

A 7-piece cutter set developed by Sharon Wee. The shapes and ratios in this set are those that Sharon works with on a daily basis and can be placed together to create an array of different designs.

You can be sure that the designs you create from this set will always be consistent and in proportion. You are only limited by your imagination.

HOW DO I USE IT?

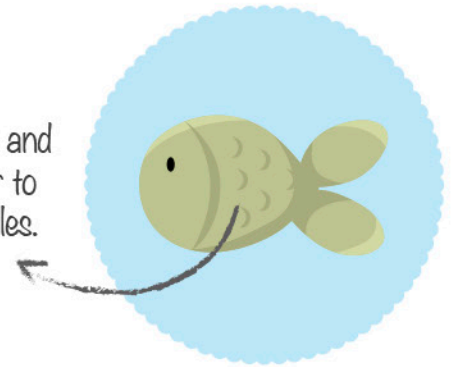
It's best to roll out your fondant or gum paste and allow it to dry slightly before cutting out the shapes. This will ensure that they won't go out of shape when you move them around.

When joining two pieces, you may need to create an indentation in one of the shapes for a smooth fit. It's best to do this using the cutter for the other shape so that the edges meet exactly. This ensures a cleaner cut and better understanding of how much to remove.

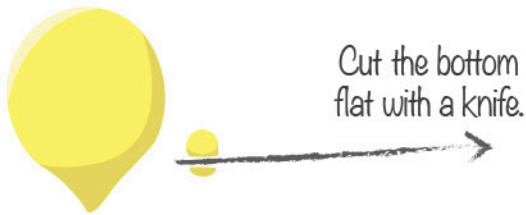
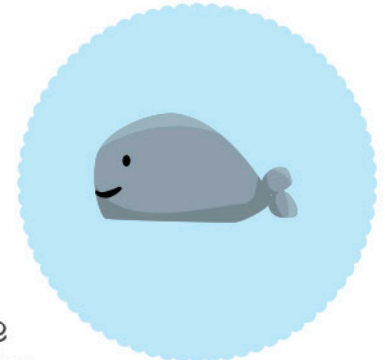
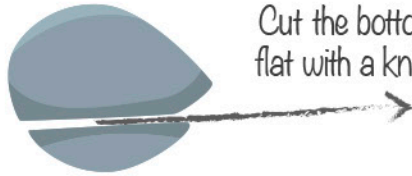
SHARON WEE CREATIONS - CUTTER SET INSTRUCTIONS



Use the oval cutter and small round cutter to mark the fish scales.



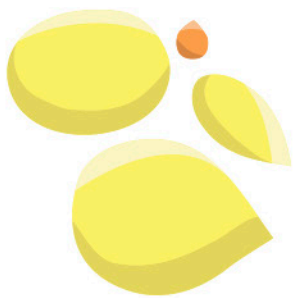
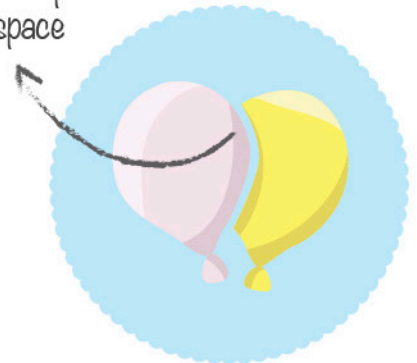
Cut the bottom flat with a knife.



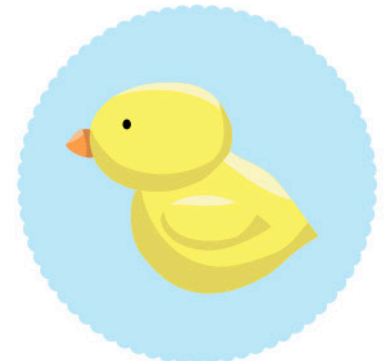
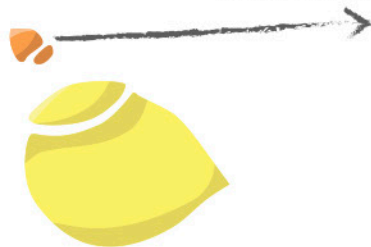
Cut the bottom flat with a knife.

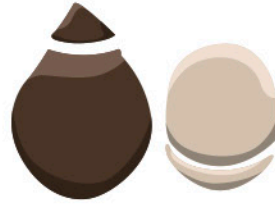
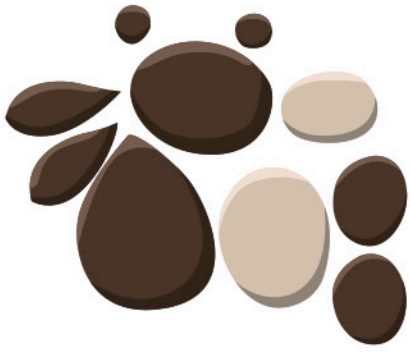


When joining multiple balloons, use the teardrop cutter to cut out a space on the side.



Cut the bottom flat with a knife.

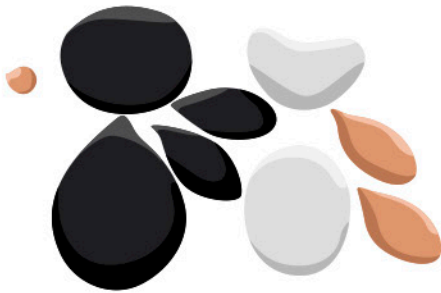




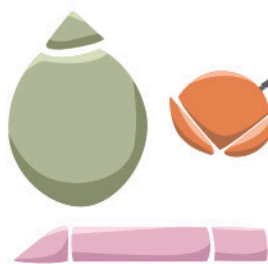
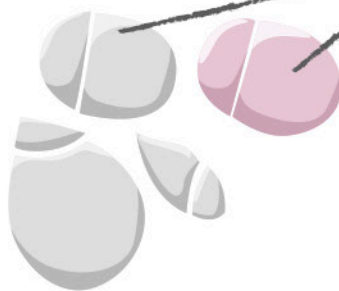
x2 - Cut the pointed end flat with a knife. These are the front legs.



x2 - Cut both ends flat with a knife. These are the back legs.

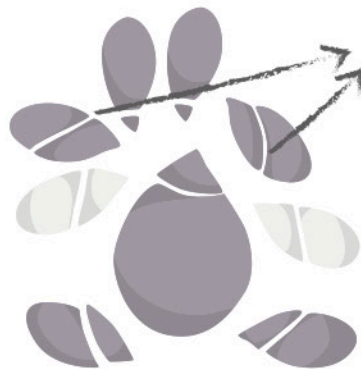
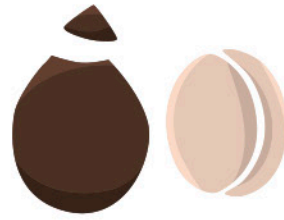


Cut the sides flat with a knife.



Use the pointed end of the teardrop shape to cut the fan





Cut the sides
flat with a knife.

